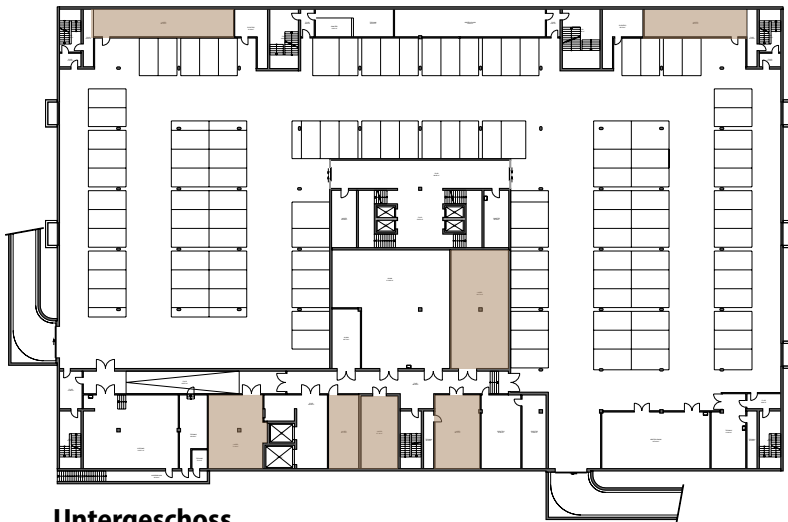


Bauarena Volketswil

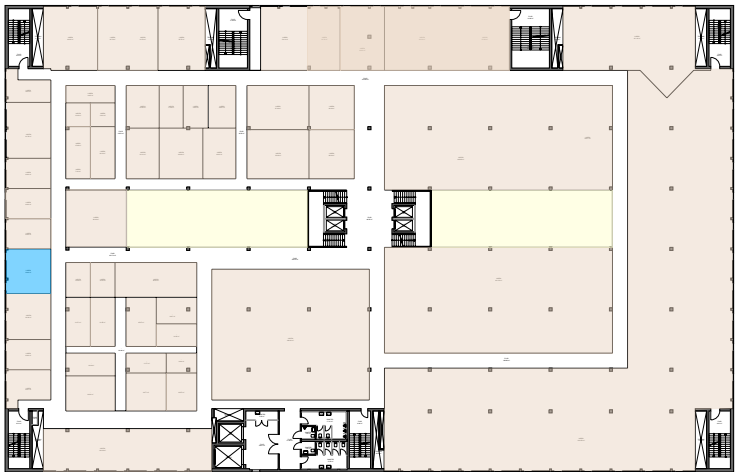
Übersicht VMF | Masstab 1:1000



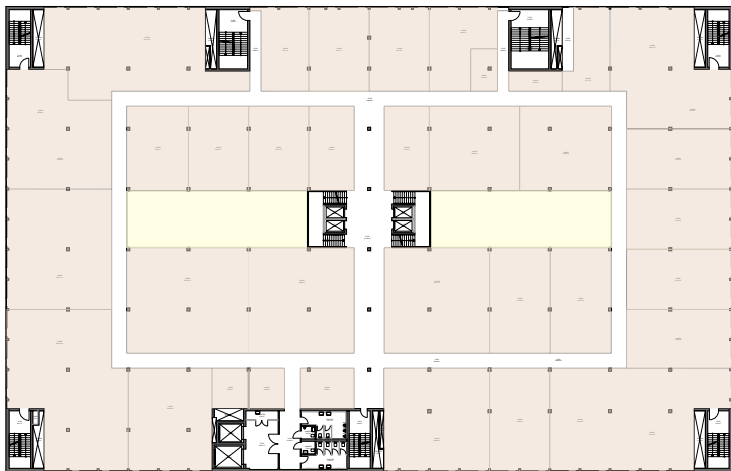
Untergeschoss



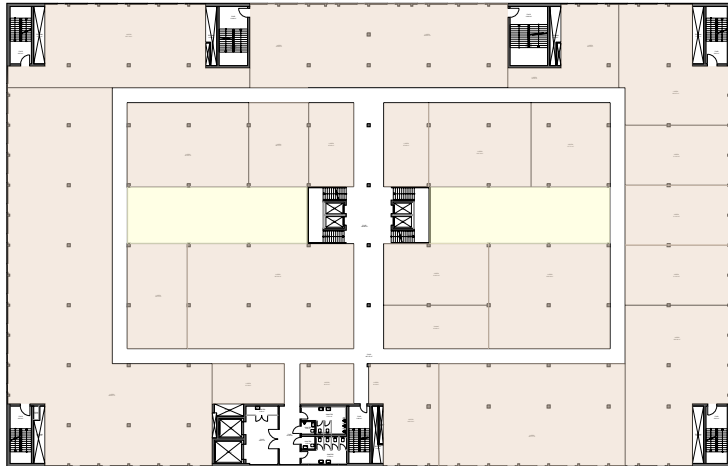
Erdgeschoss



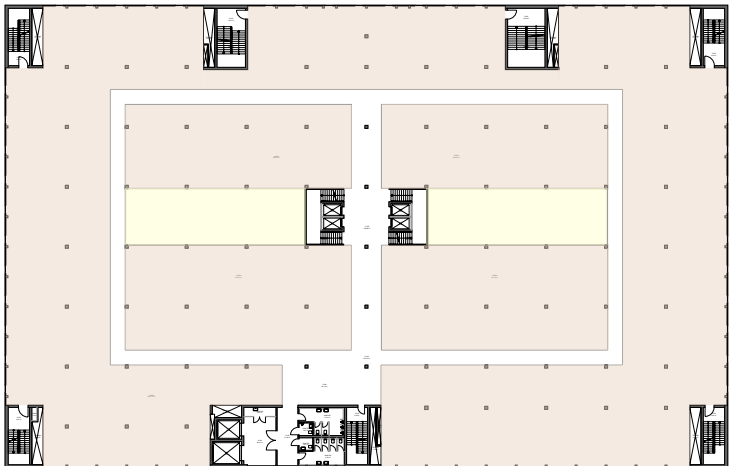
1. Obergeschoss



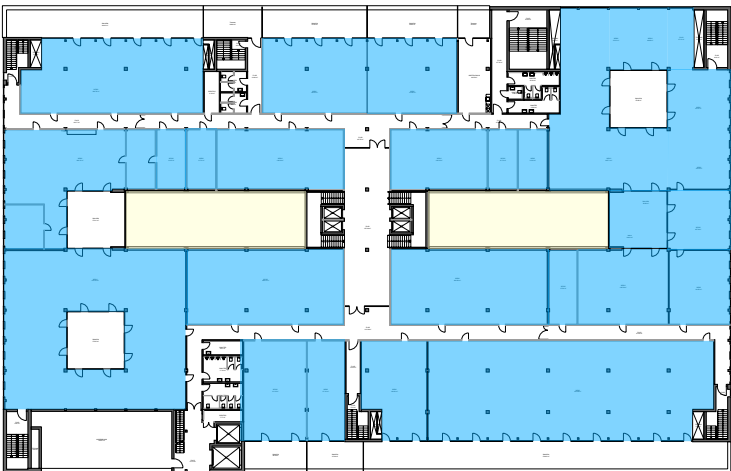
2. Obergeschoss



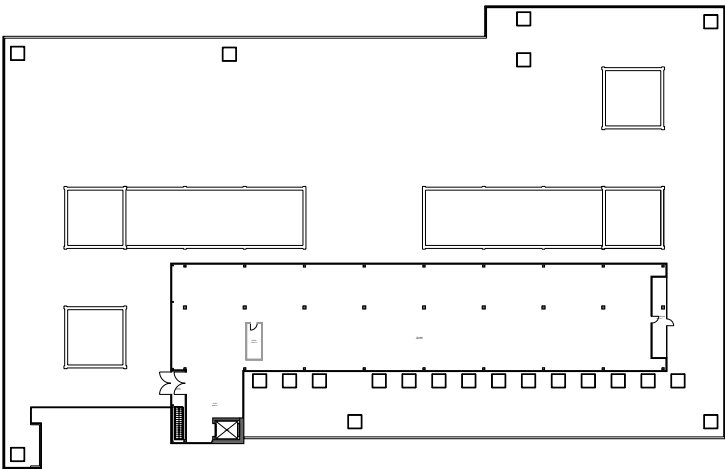
3. Obergeschoss



4. Obergeschoss



5. Obergeschoss



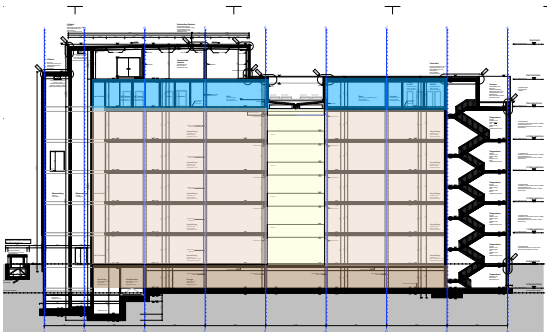
6. Obergeschoss

- Lagerfläche 728m2
 - Ausstellungsfläche: 20'843m2
 - Bürofläche/Kundenberatung: 3'877m2
- VMF total: 25'448 m2

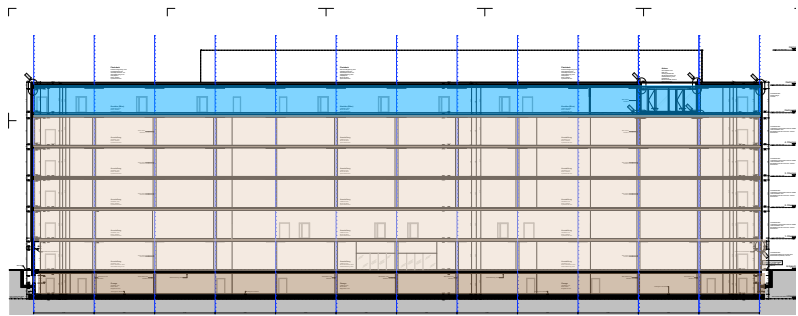


Bauarena Volketswil | Übersicht

Situationsplan | Masstab 1:1000



Querschnitt Hauptgebäude mit Lichthof



Längsschnitt

Grundrisse